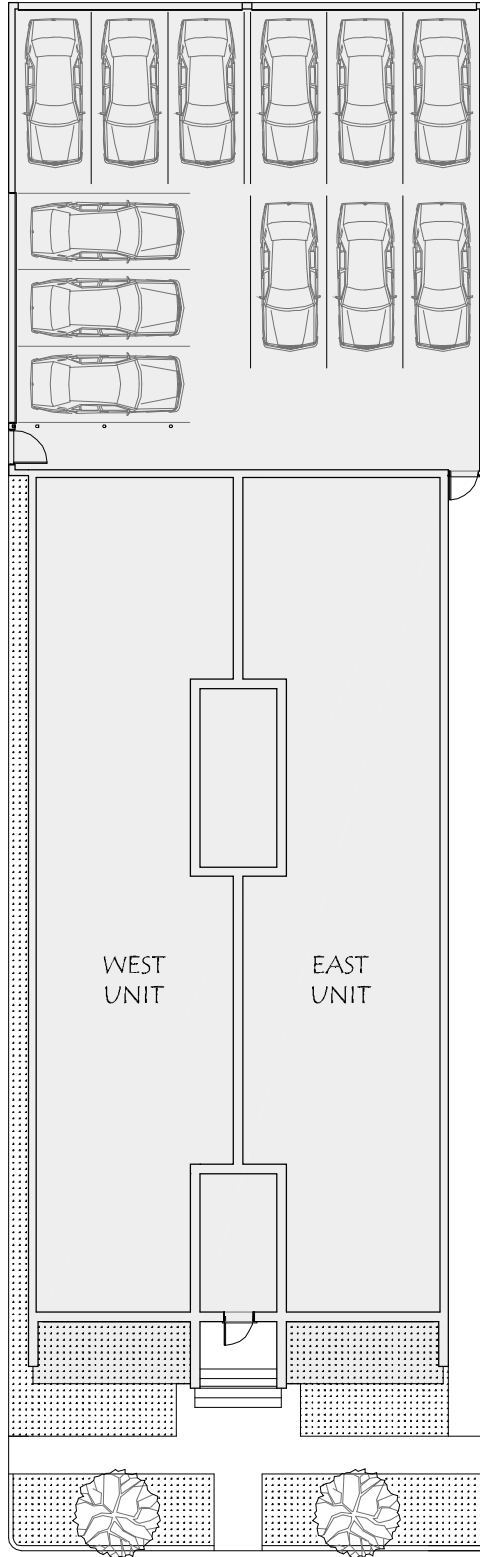


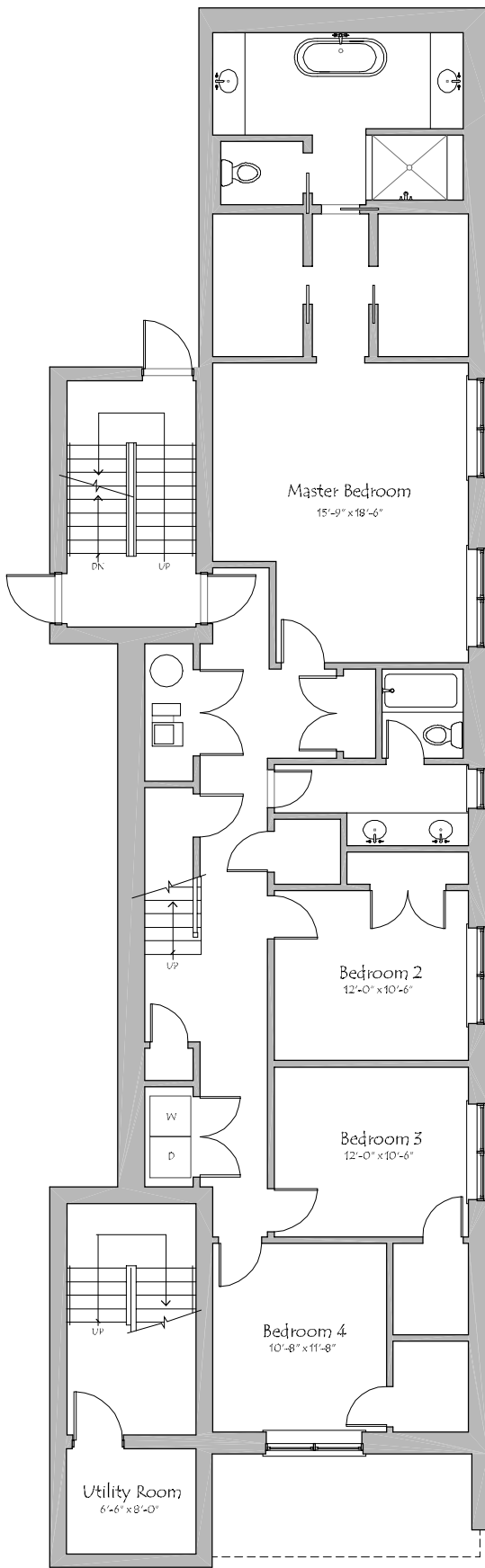
ALLEY



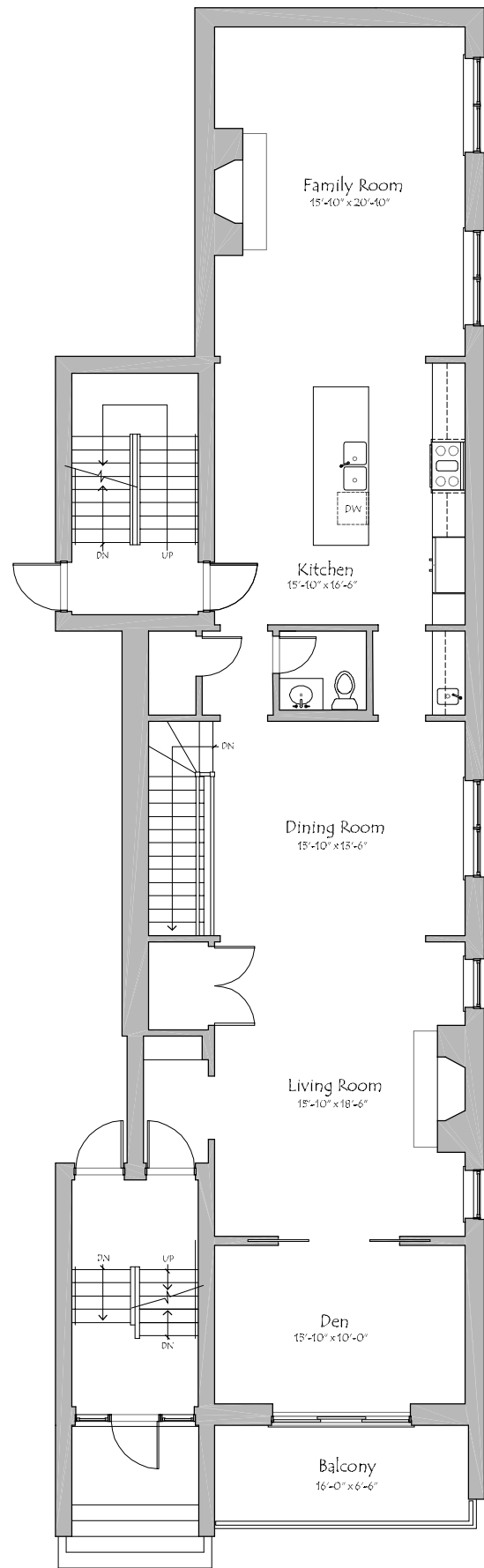
KEY PLAN  
1150 WEST HUBBARD STREET



DIMENSIONS ARE APPROXIMATE, PLANS AND ALL SPECIFICATIONS ARE SUBJECT TO REVISIONS DEEMED ADVISABLE BY BUILDER, ARCHITECT OR REQUIRED BY LAW.



**BASEMENT**  
1,719 SQ.FT

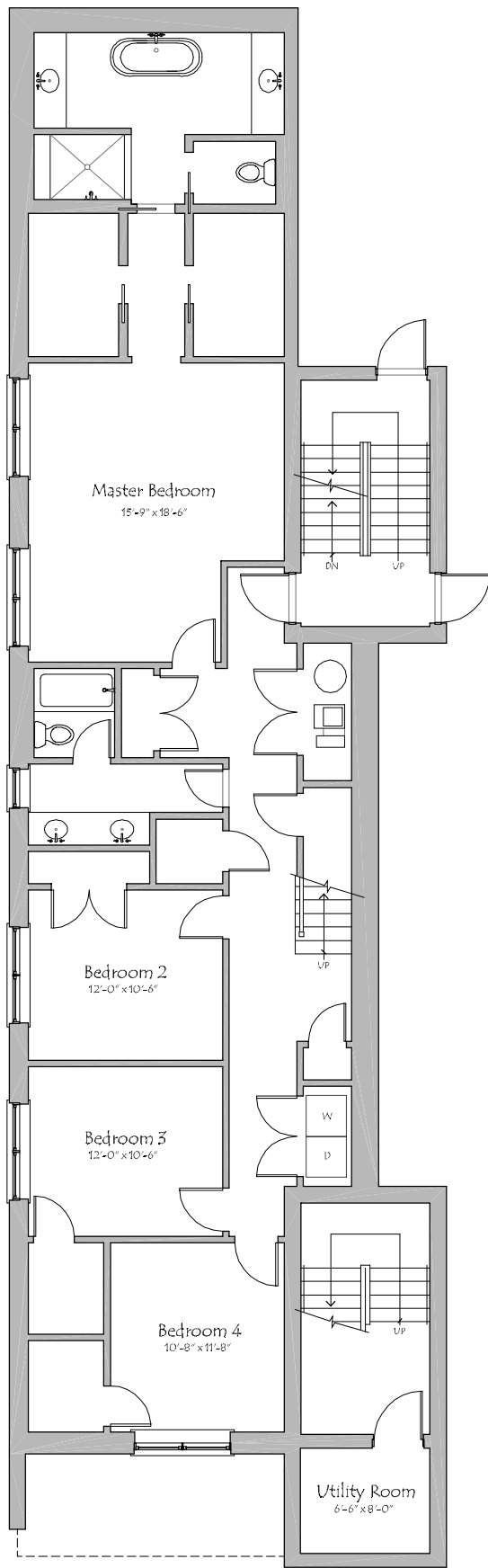


**FIRST FLOOR**  
1,719 SQ.FT

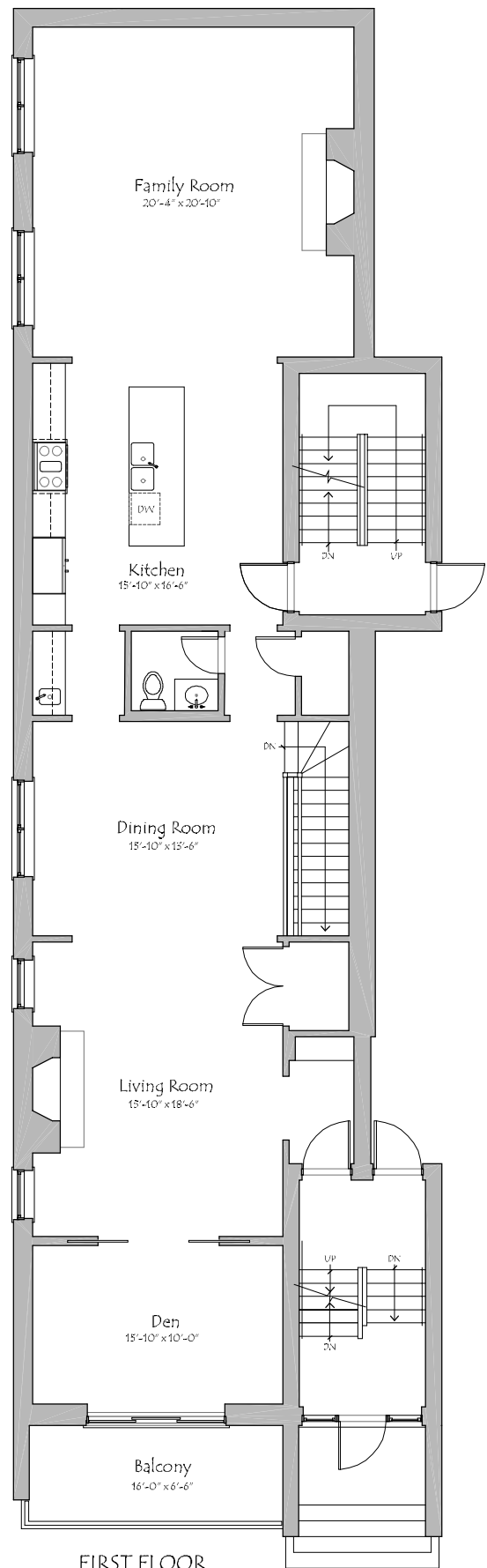
**DUPLEX EAST UNIT**  
3,438 SQ.FT.



DIMENSIONS ARE APPROXIMATE. PLANS AND ALL SPECIFICATIONS ARE SUBJECT TO REVISIONS DEEMED ADVISABLE BY BUILDER, ARCHITECT OR REQUIRED BY LAW.



**BASEMENT**  
1,719 SQ.FT

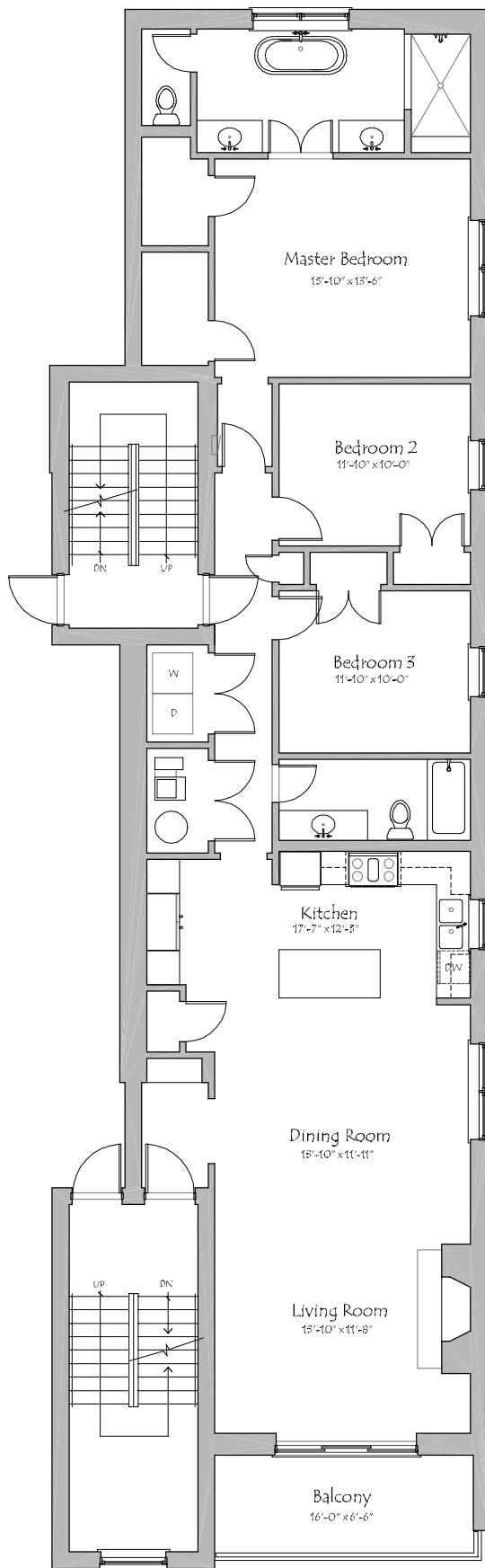


**FIRST FLOOR**  
1,820 SQ.FT

**DUPLEX WEST UNIT**  
3,539 SQ.FT.

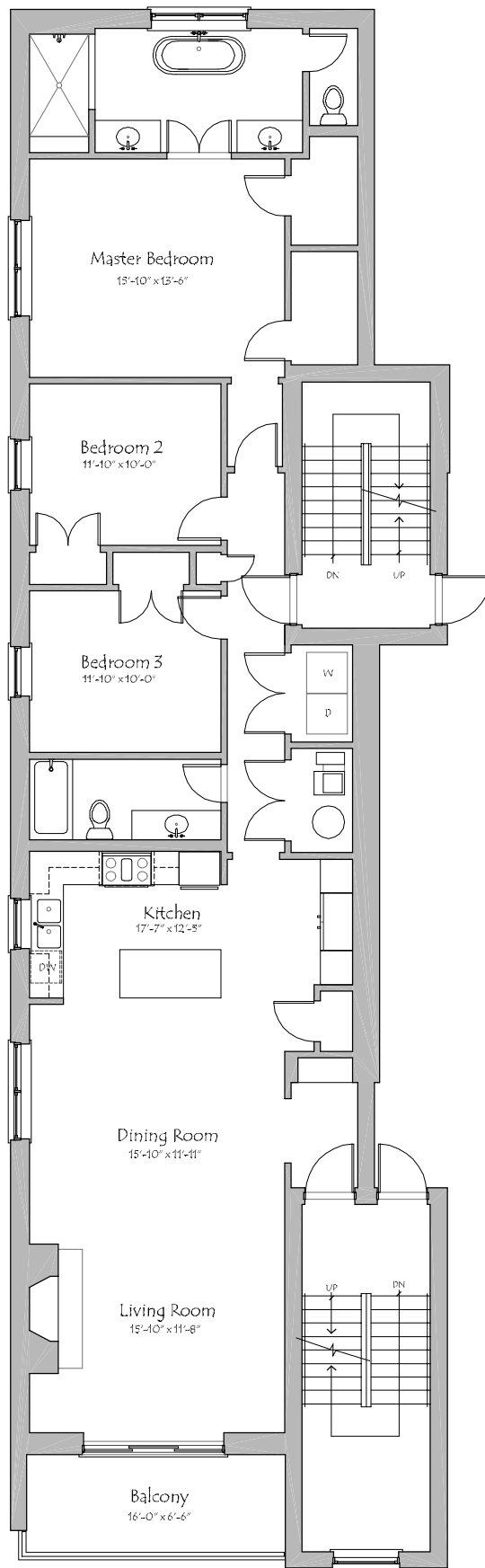


DIMENSIONS ARE APPROXIMATE. PLANS AND ALL SPECIFICATIONS ARE SUBJECT TO REVISIONS DEEMED ADVISABLE BY BUILDER, ARCHITECT OR REQUIRED BY LAW.



2ND & 3RD FLOOR  
 TYPICAL EAST UNITS  NORTH  
 1,820 SQ. FT.

DIMENSIONS ARE APPROXIMATE, PLANS AND ALL SPECIFICATIONS ARE SUBJECT TO REVISIONS DEEMED ADVISABLE BY BUILDER, ARCHITECT OR REQUIRED BY LAW.



2ND & 3RD FLOOR  
 TYPICAL WEST UNITS  NORTH  
 1,820 SQ. FT.

DIMENSIONS ARE APPROXIMATE, PLANS AND ALL SPECIFICATIONS ARE SUBJECT TO REVISIONS DEEMED ADVISABLE BY BUILDER, ARCHITECT OR REQUIRED BY LAW.